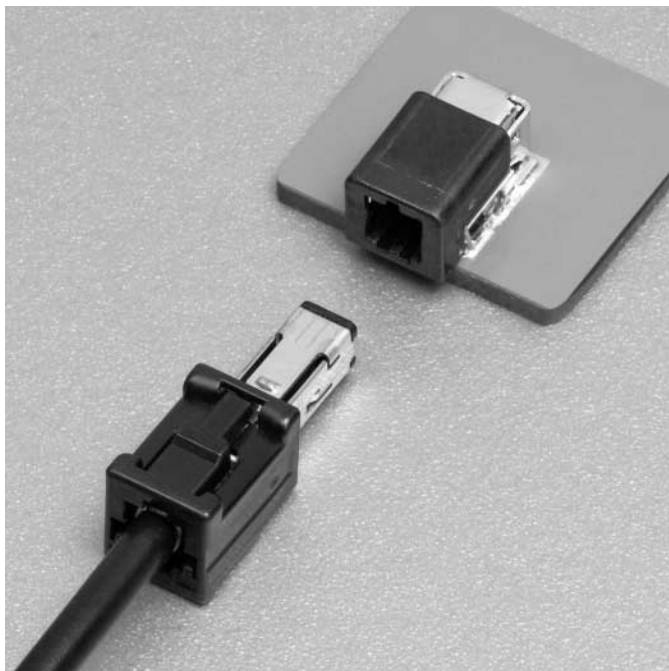


EA 2CONNECTOR

Board-to-wire/High frequency



Features

●High Reliability

Terminal structure for automotive equipments.
This small connector enables the retention force of more than 98 N with unique reinforcement tabs structure.

●Applicable Frequency 5.8 GHz

This connector is the most suitable for ETC/DSRC.

- VSWR : 1.5 Max
- Insertion Loss : -1.5dB Min

●Compact Design

Connector width : 7.4 mm/ Height : 6.3 mm

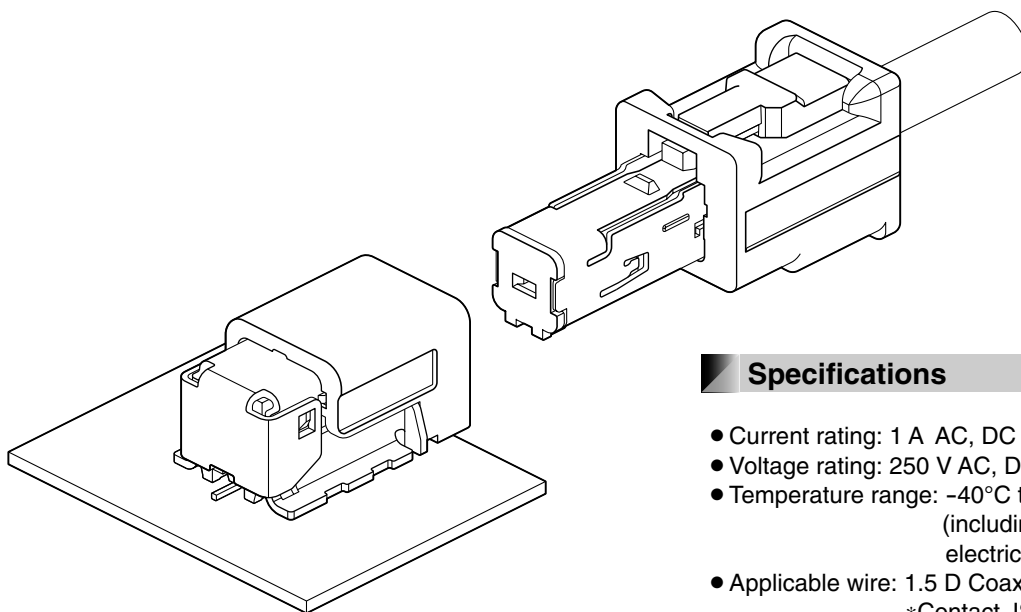
●Noise Performance

Excellent performance by metal shell shielding structure.

High Frequency Co-axial

This connector is for small high frequency coaxial signal which is suitable for automotive equipment such as ETC/DSRC, navigation system.

Applicable for surface mounting technology.

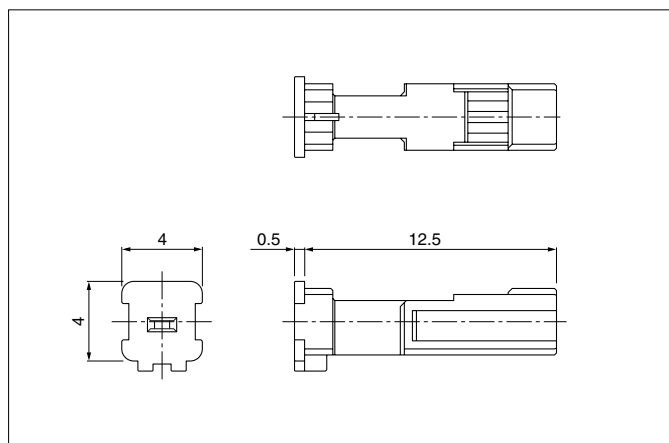


Specifications

- Current rating: 1 A AC, DC
- Voltage rating: 250 V AC, DC
- Temperature range: -40°C to +105°C
(including temperature rise in applying electrical current)
- Applicable wire: 1.5 D Coaxial cables
*Contact JST for detail about applicable wire.
- Characteristic impedance: 50 Ω
- Frequency range: DC to 6 GHz
- Circuit: Single (Coaxial)
- PC board mounting direction: Side entry (SMT)

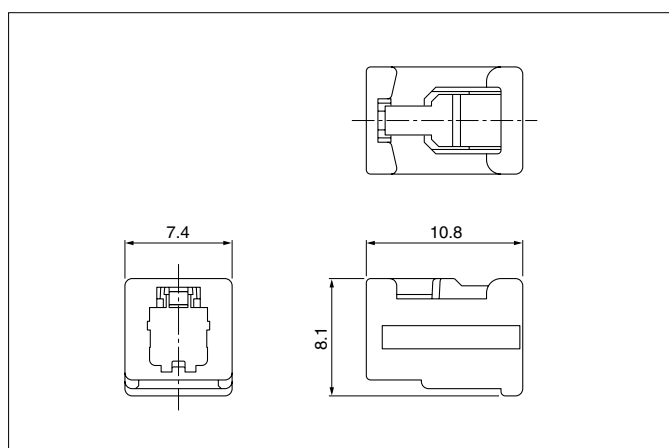
* Compliant with ELV/RoHS.
* Contact JST for details.

Inner housing of cable side



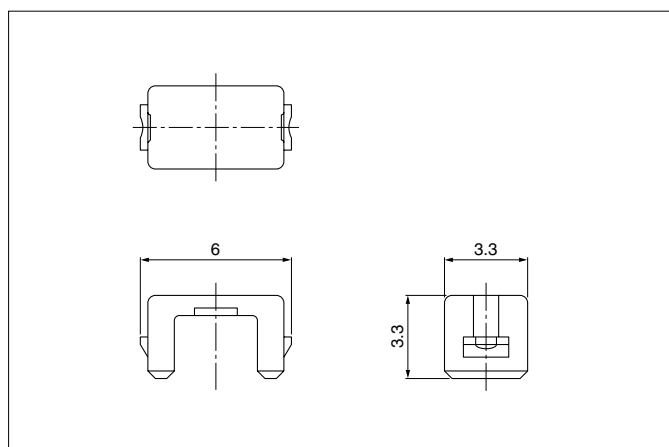
Model No.	Q'ty/box	Housing Color
EA2-PHN-2K	1,000	Black
Material and Finish		
Thermoplastic resin		

Outer housing of cable side



Model No.	Q'ty/box	Housing Color
EA2-PHG-1K	500	Black
Material and Finish		
Thermoplastic resin		

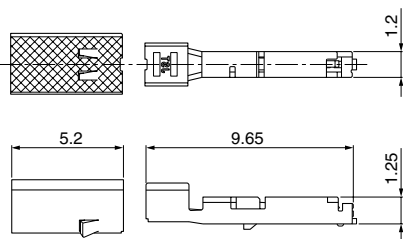
Retainer of cable side



Model No.	Q'ty/box	Housing Color
EA2-PRT-2H	4,000	Gray
Material and Finish		
Thermoplastic resin		

EA 2 CONNECTOR

Female terminal

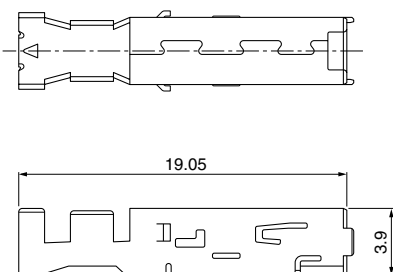


Model No.	Q'ty/reel
EA2-SCS542	10,000
Material and Finish	

Copper alloy, nickel-undercoated, Contact area; gold-plated
Barrel area; tin-plated

Note: This product displays (LF)(SN) on a label.

Shell of cable side

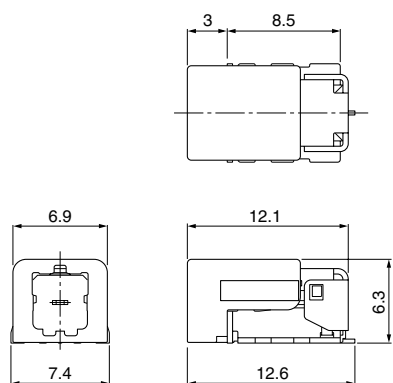


Model No.	Q'ty/reel
EA2-SSP3RPT	2,500
Material and Finish	

Copper alloy, tin-plated

Note: This product displays (LF)(SN) on a label.

Male connector

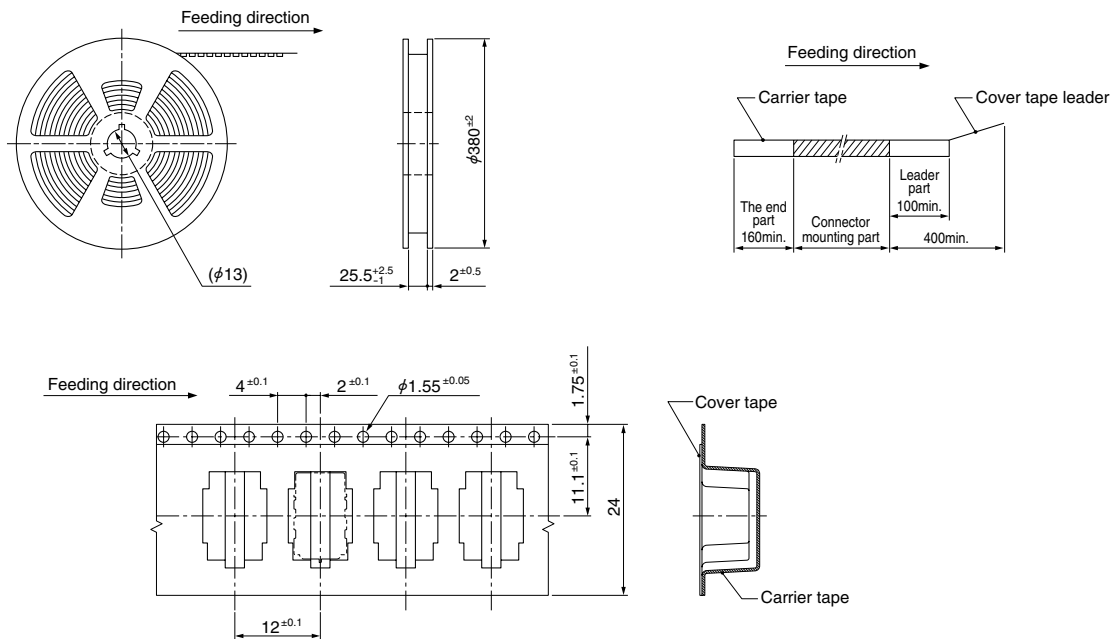


Model No.	Q'ty/reel
EA2-1RAS-12T100-K1-TR	1,000
Material and Finish	

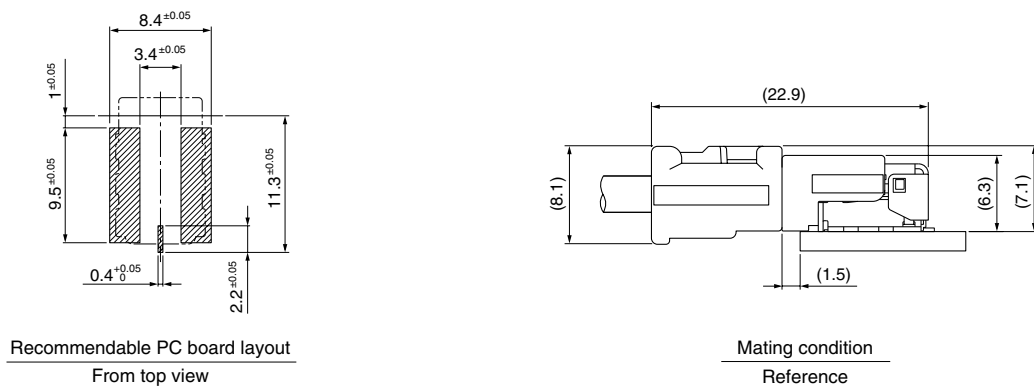
Inner housing: Heat resisting resin, Black
Outer housing: Heat resisting resin, Black
Contact: Copper alloy, nickel-undercoated,
Contact area; gold-plated
Solder tail; tin-plated
Shell: Copper alloy, copper-undercoated, tin-plated

Note: This product displays (LF)(SN) on a label.

Taping Specification



PC board layout, Assembly layout



Note: 1. Tolerances are non-cumulative: ± 0.05 mm for all centers.

2. The dimensions above should serve as guideline. Contact JST for details.

Crimping machine, Applicator

Strip terminal	Crimping machine	Crimp applicator MKS-L	
		Dies	Crimp applicator with dies
EA2-SCS542	AP-K2N	MK/EA2-SCS	APLMK EA2-SCS

Note: When crimping operation is conducted using an applicator and die set other than the above, JST cannot guarantee the performance of the terminal.

Jig

Jig	Hand crimp tool
Shell crimping jig	H2-CP-EA2
Hand press	HPD-M2A(R)

Note: Contact JST for details.